



**Oakleigh Road North, London, N20 0DP**

**Asking Price: £380,000**

*Leasehold*

## Oakleigh Road North, London, N20 0DP

This two bedroom first floor maisonette with own entrance is well located for local shops and comes with long lease and private garden.

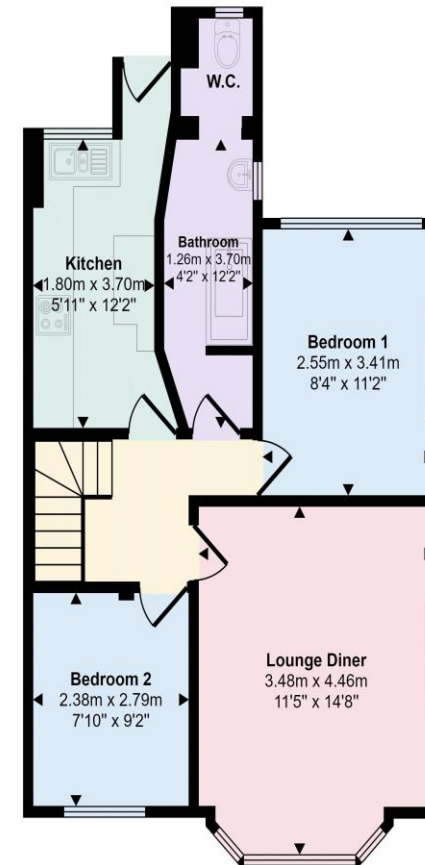
Accommodation comprises of own entrance and staircase, bright reception room to the front, two bedrooms, bathroom and well presented kitchen leading to 31ft x 26ft private garden with two sheds.

Well positioned for local shops, cafes and bus routes to Totteridge & Whetstone underground station or Arnos Grove Piccadilly Line. Schools include All Saints & Sacred Heart Primaries.

- TWO BEDROOM MAISONETTE
- FIRST FLOOR
- PRIVATE GARDEN
- OWN ENTRANCE
- WELL PRESENTED
- RECEPTION ROOM
- KITCHEN
- LONG LEASE TERM
- NO SERVICE CHARGE
- COUNCIL TAX BAND C



Approx Gross Internal Area  
51 sq m / 552 sq ft



Floorplan

This floorplan is only for illustrative purposes and is not to scale. Measurements of rooms, doors, windows, and any items are approximate and no responsibility is taken for any error, omission or mis-statement. Icons of items such as bathroom suites are representations only and may not look like the real items. Made with Made Snappy 360.







Score	Energy rating	Current	Potential
92+	A		
81-91	B		
69-80	C		
55-68	D		66 D
39-54	E	52 E	
21-38	F		
1-20	G		

## Hunters Whetstone

99 Russell Lane  
Whetstone  
N20 0BA

T: 020 8368 7138

E: [info@hunters-whetstone.co.uk](mailto:info@hunters-whetstone.co.uk)

[www.hunters-whetstone.co.uk](http://www.hunters-whetstone.co.uk)

### Disclaimer

The agent has not checked any apparatus, fixtures or fittings or services and cannot verify they are in working order or fit for their purpose. Neither has the agent checked the legal documentation to verify the Freehold / Leasehold status of the property. Photographs are for illustration only and may depict items which are not for sale or included in the sale of the property.