



Jarvis Close, Barnet, EN5

Offers in excess of: £340,000.

Freehold

Jarvis Close, Barnet, EN5

A one-bedroom house with approx. 30ft garden set within a modern development approximately one mile from Barnet town centre.

Accommodation comprises of a separate kitchen and a front aspect reception room, with access onto private garden. A double bedroom and bathroom to first floor. Additional features: Double glazed patio doors open onto a private garden with paved seating area leading onto grass area with hedge borders. Gas central heating with combi boiler, off street parking, Property is offered with the freehold.

The property is approximately one mile from Barnet Town Centre providing an array of High Street shops, The Spires shopping precinct, housing Waitrose and H&M and High Barnet underground Station and bus routes with easy access to M25 and A1M and proximity to both Hertfordshire and the City, whilst being nestled in a quiet neighbourhood.

- FREEHOLD
- ONE BEDROOM
- SEPERATE THREE PIECE BATHROOM
- DOUBLE GLAZED
- GAS CENTRAL HEATING
- PATIO DOORS LEADING ONTO PRIVATE GARDEN
- OFF STREET PARKING
- CHAIN FREE

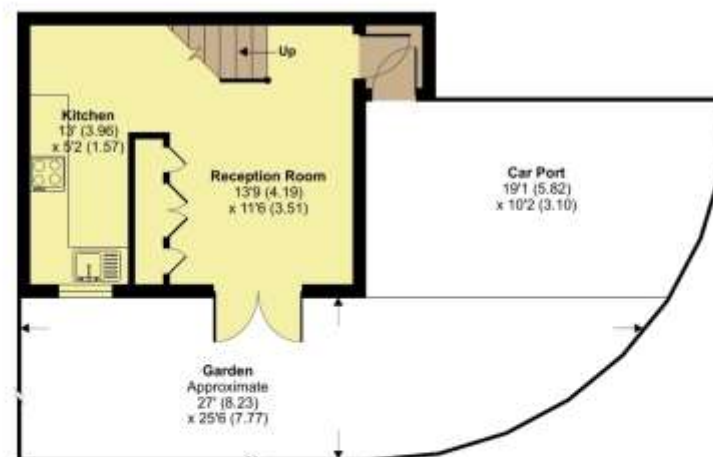
Jarvis Close, Barnet, EN5

Approximate Area = 476 sq ft / 44.2 sq m

For identification only - Not to scale



FIRST FLOOR
APPROX FLOOR
AREA 21.5 SQ M
(232 SQ FT)



GROUND FLOOR
APPROX FLOOR
AREA 22.7 SQ M
(244 SQ FT)



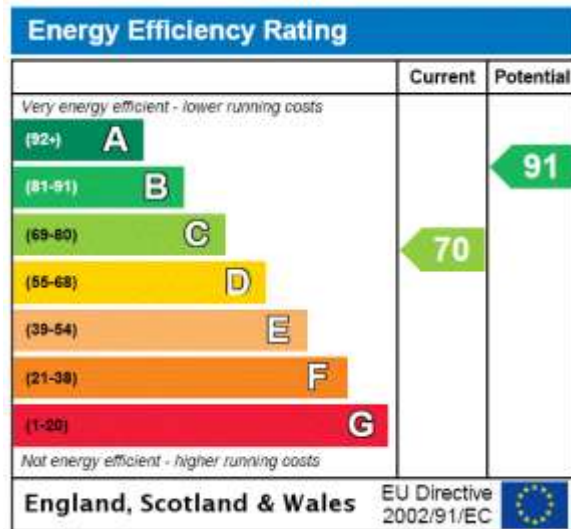
Floor plan produced in accordance with RICS Property Measurement Standards incorporating International Property Measurement Standards (IPMS) Residential, 3rd Edition 2024. Produced for Hunters Property Group, REF: 112009











Hunters Barnet

41 High Street
 High Barnet
 Barnet
 Hertfordshire
 EN5 5UW

T: 020 8441 3377 (sales) | 8441 6969 (lettings)

E: info@hunters-barnet.co.uk

www.hunters-barnet.co.uk

Disclaimer

The agent has not checked any apparatus, fixtures or fittings or services and cannot verify they are in working order or fit for their purpose. Neither has the agent checked the legal documentation to verify the Freehold / Leasehold status of the property. Photographs are for illustration only and may depict items which are not for sale or included in the sale of the property.

Reference: **BRN240179**