



Domville Close, London, N20 0LE

Offers in Excess of £600,000
Freehold

Domville Close, London, N20 0LE

Set in this quiet residential development this three bedroom house with open plan kitchen living room and neatly tended garden.

Ground floor accommodation comprises, entrance hall, W/C, storage cupboard, open plan kitchen living room with integrated appliances and french doors leading to well presented garden. Three double bedrooms to first floor and three piece family bathroom.

Within walking distance from Whetstone High road and its array of shops, cafe's and bars together with Totteridge & Whetstone station providing direct links to Central London.

- **THREE BEDROOM HOUSE**
- **OPEN PLAN LIVING ROOM**
- **NEATLY TENDED GARDEN**
- **QUIET RESIDENTIAL TURNING**
- **DOWNSTAIRS W/C**
- **ALL DOUBLE BEDROOMS**
- **0.5 MILES FROM UNDERGROUND**
- **CLOSE TO HIGH ROAD**
- **COUNCIL TAX BAND D**



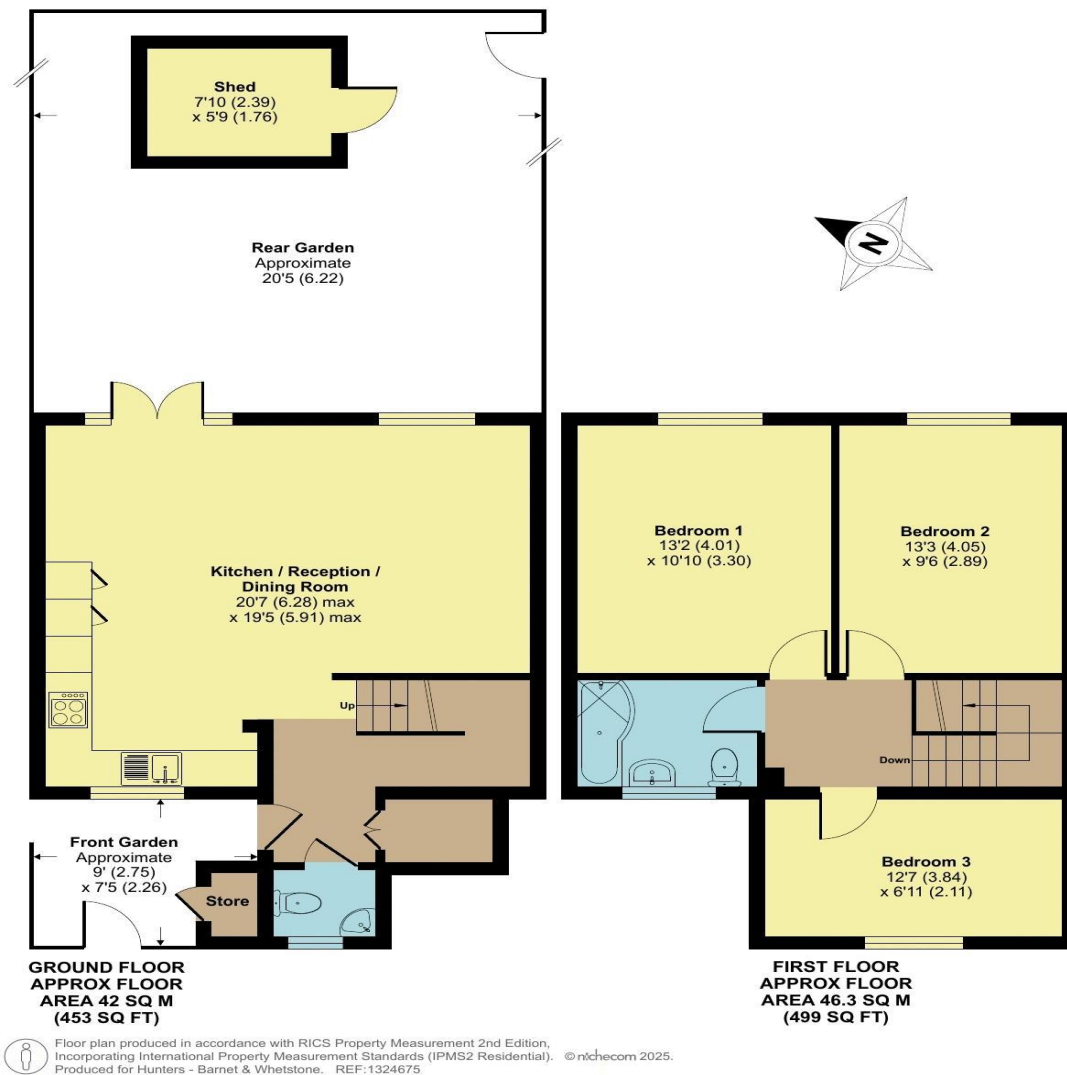
Domville Close, London, N20

Approximate Area = 952 sq ft / 88.4 sq m (excludes store)

Outbuilding = 45 sq ft / 4.1 sq m

Total = 997 sq ft / 92.5 sq m

For identification only - Not to scale













Score	Energy rating	Current	Potential
92+	A		
81-91	B		
69-80	C		78 C
55-68	D	68 D	
39-54	E		
21-38	F		
1-20	G		

Disclaimer

The agent has not checked any apparatus, fixtures or fittings or services and cannot verify they are in working order or fit for their purpose. Neither has the agent checked the legal documentation to verify the Freehold / Leasehold status of the property. Photographs are for illustration only and may depict items which are not for sale or included in the sale of the property.

Hunters Whetstone

99 Russell Lane
Whetstone
N20 0BA

T: 020 8368 7138

E: info@hunters-whetstone.co.uk

www.hunters-whetstone.co.uk